

*Franklyn  
James*



Len Bishop Court, 63 Schoolhouse Lane, E1W 3AJ

£1,750 Per Calendar Month

*Franklyn  
James*



## Len Bishop Court, 63 Schoolhouse Lane, E1W 3AJ

£1,750 Per Calendar Month

- Spacious one bedroom apartment on the sixth floor of a purpose built development
- Bright open plan living and kitchen area with private terrace access
- Larger than average bedroom with room for a home office
- Generous hallway
- Large Terrace
- Lift access
- Close to Wapping and Narrow Street with cafés, restaurants and local amenities
- Nearby primary and secondary schools, ideal for families
- Walking distance to King Edward Memorial Park and Thames Path for outdoor activities
- Excellent transport links: Shadwell DLR, Limehouse DLR, C2C rail and nearby bus routes (D3 & 100)

EPC rating- B  
Tax band- C

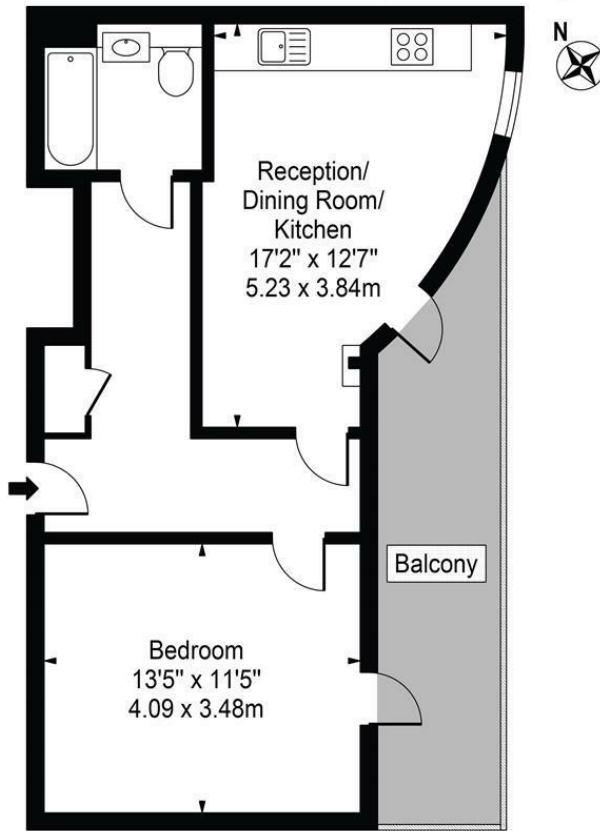


A spacious one bedroom apartment located on the sixth floor of a well maintained development. The property offers a bright open plan living and kitchen area with access to a private terrace, a generous hallway and a larger than average bedroom with space for a home office.

Ideally positioned for City and Canary Wharf commuters, the apartment is moments from Shadwell DLR, with Limehouse DLR and C2C rail services also nearby, plus excellent bus links. Local amenities, cafés, and restaurants can be found in Wapping and along Narrow Street, with King Edward Memorial Park and the Thames Path close by.

The property is well served by a selection of reputable schools making it suitable for professionals, students and families alike. Supermarkets and everyday conveniences are also within easy reach.

**Len Bishop Court**  
 Approx. Gross Internal Area 499 Sq Ft - 46.36 Sq M

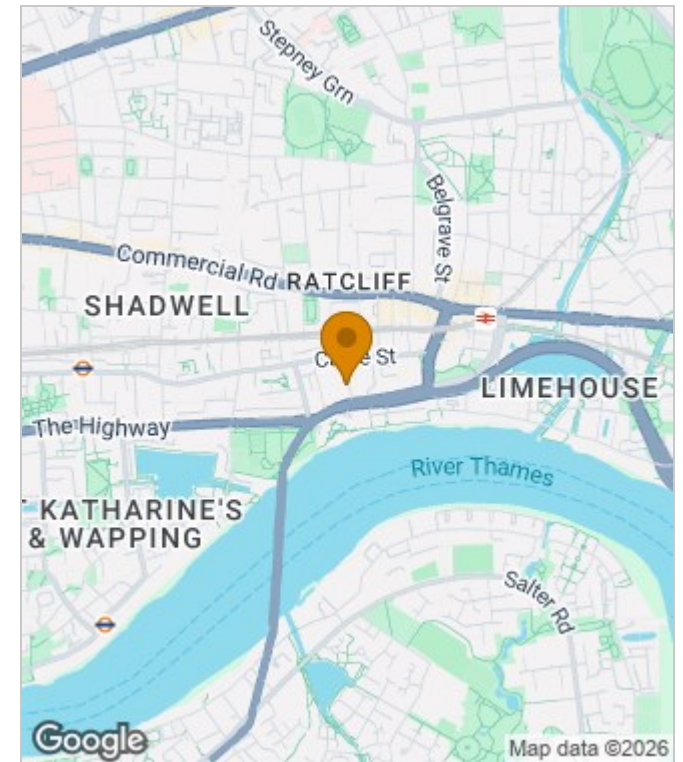


**Sixth Floor**

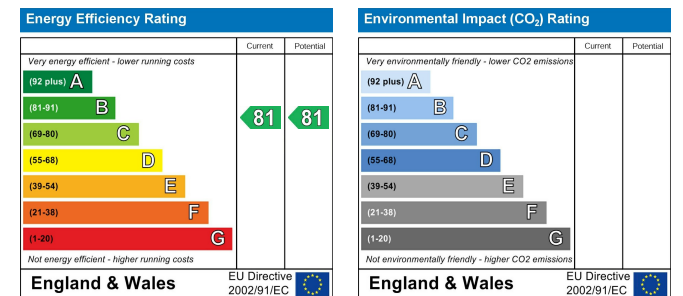
For Illustration Purposes Only - Not To Scale

This floor plan should be used as a general outline for guidance only and does not constitute in whole or in part an offer or contract. Any intending purchaser or lessee should satisfy themselves by inspection, searches, enquiries and full survey as to the correctness of each statement. Any areas, measurements or distances quoted are approximate and should not be used to value a property or be the basis of any sale or let.

**Area Map**



**Energy Performance Graph**



These particulars, whilst believed to be accurate are set out as a general outline only for guidance and do not constitute any part of an offer or contract. Intending purchasers should not rely on them as statements of representation of fact, but must satisfy themselves by inspection or otherwise as to their accuracy. No person in this firm's employment has the authority to make or give any representation or warranty in respect of the property.